

Numerical Investigation on Effect of Wind and Gas Injection on Indirect Dry Cooling Towers: A Case Study of Shaheed Rajaei Power Plant

Reza Amini¹, Mehdi Kashfi¹, Mohsen Amini^{2,*}

¹Department of Mechanical Engineering, University of Tabriz, Tabriz, Iran

²Department of Mechanical Engineering, K. N. Toosi University of Technology, Tehran, Iran

Abstract Numerical study of effective parameters on natural convection heat transfer in a dry cooling tower is carried out by using the commercial software of Ansys-Fluent. The modelled dry cooling tower has the same geometry as in Shahid Rajaei power plant in Iran. For a particular performance of the cooling tower, numerical and experimental results are compared, and suitable algorithm and turbulence model are determined. Results show that k- ϵ -RNG full buoyancy effect model is the most accurate approach for modeling the turbulence and COUPLED algorithm is the best for solving for the coupling between pressure and velocity fields. Grid independency is validated, and the best numerical grid is selected. Due to presence of external flow, domain independency is also checked, and the best domain is selected. Effect of wind and force convection on cooling process is also studied. At the end, effect of high velocity air injection on increasing momentum and efficiency of the cooling process is studied. At moderate atmospheric condition, air injection slightly improves the amount of heat transfer, but it can reinforce the flow in unstable conditions like stormy weather and thus sustain the cooling process.

Keywords Computational fluid dynamics (CFD), Natural convection, Heat transfer, Dry cooling tower

1. Introduction

Natural convection is a heat transfer mechanism that happens due to gravity and differences in air density. Density difference could be caused by existing temperature gradient and fluid composition. Natural convection depends on surface geometry, temperature difference, and thermo-physical properties of the fluid. Convective heat transfer can be categorized depending on the nature of flow. In force convection, flow is created by external sources like fans, pumps or atmospheric winds [1-6], which makes it controllable and more efficient for applications where temperature should be monitored such as engine cooling systems [7]. In contrast, natural or free convection occurs due to buoyancy force, which is caused by density difference in air parcels. Free convection in cylindrical chamber has been an interesting subject for scientists and engineers due to numerous applications in various fields. Cylindrical objects have numerous applications in industry including exhaust towers, cooling towers, tornado simulators [8, 9], tubes,

thermal rods, coils, bioreactors, wires, etc. For a tall vertical cylinder, natural convection and fluid flow are studied analytically and numerically by Eckert [10] and Ozisik [11] and Ramezani et al. [12]. Natural convection in horizontal cylinders can be simplified by considering it as a 2D problem. This approach can be applied to vertical cylinders. Asymmetrical solutions of this problem are well studied analytically [13-15] and numerically [16, 17] in the literature. In case of a thin vertical cylinder, a fuel cell in a research reactor for instance, there is only one numerical solution provided by Lee et al. [18], which needs more scrutiny and validation. Badruddin et al. [19] studied natural convection in a porous ring-shaped object. The optimized use of turbulence for natural convection on a horizontal cylinder is studied by Bassam and Abu-Hijleh [20]. Over the past decades, accurate numerical techniques have been used for different engineering and academic applications such as cooling system of turbomachinery [21-23], heat transfer [24, 25], wind energy [26-28], dynamic systems [29, 30], ocean wave energy convertor such as new type "Searaser" [31-32], and power generation systems [33-36] as well as accurate experimental techniques using image processing [37-39]. Numerical study of natural convection around a set of 2 isothermal horizontal cylinders is studied by Chouikh et al. [42], they scrutinized the effect of geometry, velocity and temperature of the fluid on the heat transfer, and they showed that the heat transfer of the top cylinder increases with the

* Corresponding author:

aminimohsen04@gmail.com (Mohsen Amini)

Published online at <http://journal.sapub.org/ajfd>

Copyright © 2018 The Author(s). Published by Scientific & Academic Publishing

This work is licensed under the Creative Commons Attribution International

License (CC BY). <http://creativecommons.org/licenses/by/4.0/>

Rayleigh number for the same spacing. Yousefi and Ashjaee [43] studied natural convection from a set of isothermal oval vertical cylinders experimentally. This study showed the impact of Rayleigh number, cylinders separation distance, and cylinder position in the array on the free convection heat transfer for any individual cylinder in the array. Natural convection has been subject of active study in various fields. Davani et al. [44, 45] developed a solar energy driven distillation still that uses natural convection as for water treatment. Convection on cylindrical objects have also been used studied in gas contamination removal techniques [46].

In the current study, heat transfer over a dry cooling tower has been simulated using a CFD model. By comparing the results from the simulations and experimental data, the best models for simulation are chosen. After validating simulated results, impact of wind velocity and high velocity air injection on heat transfer are investigated. Finally a comparison between results of different conditions is presented to investigate usefulness of high velocity air injection on the cooling rate.

2. Description

2.1. Importance of Cooling Towers

In a dry cooling tower air is used as the coolant. In this type of cooling process, hot and cold fluids are not directly in contact. Instead, hot fluid which can be liquid, or vapor passes through a set of finned tubes and heat transfer process occurs as air flows over the tubes. Air flow can be natural due to free convection or it can be forced by using a suction or blower fan. Since there is no need for makeup water in dry cooling towers, they are considered cost-effective and favorable alternative in areas with limited water resources. The cooling mechanism in dry cooling towers is the same as heat exchangers where heat is transferred due to convection unlike evaporative cooling systems. Therefore, the minimum achievable temperature is ambient dry-bulb temperature (DBT) and not the wet-bulb temperature (WBT). DBT is usually higher than WBT; thus, the efficiency of a dry tower is higher in dry rather than humid days.

Direct dry cooling tower is one of the most common applications of dry cooling processes that acts like car radiator. In this method, water vapor that leaves turbine, enters a series of finned tubes where it cools down with the flow of cooler air on the outer side of the tubes. In direct dry cooling towers, which are called air condenser, vapor tubes are in an A shape figure. Water vapor is condensed and directed to steam production cycle. Dry cooling towers do not have undesirable effects like fog production which occurs in wet cooling towers.

2.2. Disadvantages of Dry Cooling Tower

As previously mentioned, cooling process in dry towers is a function of ambient DBT which means that the minimum achievable fluid temperature is ideally equal to the ambient

temperature. Therefore, since DBT is often more than WBT, dry cooling towers perform weaker than wet cooling towers in warm weather. Moreover, since there is a partial vacuum in dry cooling towers, air leakage is a major problem.

Since the cooling process is based on convection in dry cooling towers, a big cross-sectional area is needed; therefore, the tower is much larger compared to wet cooling towers and as a result higher capital investment is needed.

2.3. State of the Problem

In this paper effect of various factors on heat transfer process in a dry cooling tower will be studied.

Geometry of the problem: A dry cooling tower in Shahid Rajaei power plant that is located 25 km away from Qazvin, Iran is selected for the simulation. The dimensions and other characteristics of the hyperbolic tower are as follows: Tower height is 125 m lower diameter is 110 m, upper diameter is 62 m, number of triangular radiators is 284, the height of the radiators is 20 meters from the ground, width of the radiators is 1.5 m each, and radiators have placed in an arrow configuration with outer angle of 60° . The injector has a diameter of 8 m which is 12 m tall, and it is located at height of 52 m. The domain is 1375 m tall and has the diameters of 1430 m. The model geometry and computational domain can be seen in Fig. 1 and 2.



Figure 1. Geometry of studied dry cooling tower and simulation domain

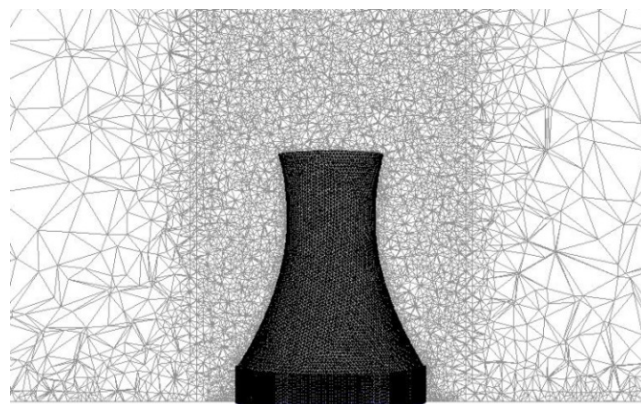


Figure 2. Mesh for the simulation

3. Solution Method

3.1. Mesh Generation

Domain Independency: In study of external flow around Heller dry cooling tower domain independency analysis is crucial. In this analysis, domains of different sizes should be examined to find the smallest domain where the increase in its size does not have any influence on the solution. The domain needed in this problem is a cylinder with height of H (m) and diameter of D (m). Both dimensions will be increased, while D/H is fixed. The increasing factors would be chosen as a function of tower's height and the biggest diameter. Results of domain independency can be seen in Table, where D_i is the domain's diameter and D_0 is tower's biggest diameter.

Grid Independency: As it can be seen in Fig. 2, tetrahedral mesh grid is used for discretizing the domain for the simulation. Before discussing the results from simulation, grid independency should be evaluated. In grid independency analysis, further decrease in the mesh grid sizing of the independent grid does not change the solution with a specific accuracy. In Table 2, 4 different mesh grid sizes are considered. First and second mesh grids changed the results drastically, but the third one can be considered as the principal mesh grid for this study since the further decrease in mesh sizing (increase in the number of computational cells) does not change the results significantly (less than 0.01% change in radiator heat transfer).

Table 1. Domain independency evaluation for the simulation

Domain Number D_i	Domain ratio (D_i/D_0)	Heat Transfer from Radiator (MW)
1	4	283.3231
2	8	286.4341
3	12	287.3124
4	16	287.3886

Table 2. Number of cells and corresponding simulation result

Mesh Grid Number	Number of Cells	Radiator Heat Transfer (W)
1	876432	710036.34
2	1023549	712145.85
3	1343988	712964.95
4	1976412	713036.23

3.2. Governing Equations

Boussinesq approximation will be used in which all the properties of the fluid except the density in the buoyancy term in momentum equation are fixed. This assumption is valid when the temperature difference between wall and the fluid is less than 20 degrees Celsius. Otherwise, the ideal gas law assumption will be used. Based on these assumptions, governing equations for steady-state heat transfer are mass, momentum, and energy conservation. Governing equations in cylindrical coordinate can be written as follows:

$$\frac{\partial}{\partial z}(ru) + \frac{\partial}{\partial r}(rv) = 0 \quad (1)$$

$$u \frac{\partial u}{\partial z} + v \frac{\partial u}{\partial r} = \frac{\mathcal{G}}{r} \frac{\partial}{\partial r} \left(r \frac{\partial u}{\partial r} \right) + g \beta (T - T_\infty) \quad (2)$$

$$u \frac{\partial T}{\partial z} + v \frac{\partial T}{\partial r} = \frac{\alpha}{r} \frac{\partial}{\partial r} \left(r \frac{\partial T}{\partial r} \right) \quad (3)$$

where r is radial coordinate, \mathcal{G} is kinetic viscosity, u and v are velocity component in r and θ directions, respectively. In natural convection problems, the driving force is caused by density differences which is a function of temperature gradient. Hence, identifying temperature field is essential for solving the velocity field. Consequently, momentum and energy equations should be solved simultaneously. The main flow in this type of heat exchangers is natural convection heat transfer or in other words, buoyancy-driven flow. Principal reason behind natural convection heat transfer process is reduction in density due to increase in temperature; Thus, warmer fluid will be replaced by colder and consequently lighter fluid will move against gravity. For this reason, a function for density variation and change in temperature should be used. Ideal gas law and Boussinesq equation are used for this purpose. Normally when the temperature difference is less than 20 degrees, Boussinesq equation is used to model density variations with temperature change. Using the ideal gas law decreases total run time in simulation, but occasionally has higher error. In this study, both methods are used for comparison to experimental data and results are presented in Table 3.

Boussinesq equation is in the form of:

$$(\rho - \rho_0)g \approx -\rho_0\beta(T - T_0) \quad (4)$$

where ρ and ρ_0 are density and reference density, g is gravitational acceleration, β is thermal expansion coefficient, T and T_0 are temperature and reference temperature. Coefficient of thermal expansion in Boussinesq equation is 0.0003331 (1/T) at the room temperature. Ideal gas law is in the form of:

$$PV = nRT \quad (5)$$

where P is pressure, V is volume, n is amount of substance of the gas, T is temperature, R is gas constant.

4. Numerical Model Validation and Details

Before performing the CFD simulation in any study, the accuracy of the appropriate algorithm for simulation should be verified. This will be done using comparison between experimental and numerical data. In the current simulation, geometrical data and performance of the dry cooling tower of Shahid Rajaee power plant is used for validation. In this study, coupling algorithms for pressure and velocity variables are used. Despite the small difference in the values between two methods, coupled algorithm has lowest error as it can be seen in Table 4 and hence, all the computations will be carried out using this method.

Table 3. Heat Transfer as a function of different models for simulating the density in a buoyant flow

Modeling Method	Radiator Heat Transfer (W)
Experimental	718533.91
Boussinesq eqn.	710467.91
Ideal Gas Law	713036.91

Table 4. Sensitivity analysis of various pressure-velocity coupling models

Algorithm	Radiator Heat Transfer (MW)
Experimental	718533.45
Simple	713036.34
PISO	713643.06
Coupled	713974.23

Properties of Operating Fluid: Operating fluid is air with the density as a function of temperature; c_p is $1006.43 \left(\frac{J}{kgK}\right)$, thermal conductivity is $0.0242 \left(\frac{W}{mK}\right)$, viscosity is $1.79e-5 \left(\frac{kg}{ms}\right)$ and coefficient of thermal expansion is $0.00333 \left(\frac{1}{K}\right)$.

Modeling Turbulence: 4 different turbulence models are used in this study. Results are presented in Table 5.

Table 5. Sensitivity analysis of different turbulence models for a buoyant flow (heat flux of radiator)

Turbulence Model	Radiator Heat Transfer (MW)
Spalarat Almaras	710036.76
k- ω	712036.57
k- ϵ	713974.45
k-RNG-full buoyancy effect	714454.12

Boundary Condition: Boundary conditions used for this problem include pressure outlet at the top of the tower with the ambient temperature of 298 K and no-slip wall condition; velocity inlet for the injector with the ambient temperature. Boundary condition for the domain boundaries is pressure outlet without any wind. In presence of wind it is divided to two sections with a velocity inlet and a pressure outlet. The walls of the radiator are isothermal. The fluid in radiator has initial temperature of 318 K. It should be also noted that the walls near base of the tower are also included to mimic use of wind breaks and thus wind cannot penetrate the tower from the bottom.

Solution Methods: PRESTO algorithm is used for calculation of pressure and velocity fields and second order upwind discretization scheme is used for solving momentum and energy equations. The Convergence Absolute Criteria (CAC) for momentum and continuity residuals is 0.001 and

for energy equation is $1e-6$. Further validation of the numerical scheme used in current study is presented in Gharraei et al. [47]. Other multiphysics software such as Abaqus which offers a variety of user friendly subroutines may also be used for such simulations [48, 50].

5. Results and Discussions

Results for different cases are presented. The first case is performance of tower without any wind or air injection. The amount of heat transfer is presented in Table 6. The streamlines of the air in these three cases are shown in Fig. 3.

Effects of wind speed on the rate of cooling: The flow in natural convection heat transfer processes or buoyancy-driven flows is in opposite direction of gravitational force. When the flow moves in the same direction of natural convection (opposite of gravity) due to injection, maximum heat transfer occurs. However, since such cooling towers are in open space and most of the times outside the city area, the efficiency changes due to environmental factors such as wind and rain. Pathlines of the hot air flow are shown in Fig. 4 without and in presence of wind. Effect of 5 different wind speeds on the performance of dry towers is studied in this paper. The comparison between air velocity inside the tower with and without the presence of wind in the domain are shown in Fig. 5. Contours of velocity in tower for various wind speeds are shown in Fig. 6 and the changes in temperature, static pressure, density, and velocity inside the tower can be seen in Fig. 7. The parabolic behavior of plots could be explained by the shape of the tower. Since the geometry of the tower is such as a converging-diverging nozzle and given the fact that the fluid is considered incompressible, pressure has a decreasing-increasing behavior. Effect of wind speed on heat transfer from radiators is presented in Table 6.

Effect of high speed air injection on efficiency improvement: The main reason for movement of the fluid in natural heat transfer is buoyant flow of the warm fluid. At low temperatures, density variation and consequently the velocity of buoyant flow is low. Since the buoyant flow has low momentum, any external disturbance such as vortex shedding due to turbulent flows changes the flow direction and as a result, the efficiency decreases. For reinforcing the buoyancy, increasing the momentum, and thus increasing the efficiency, air can be injected outside of the tower at high speeds.

Table 6. Effect of wind speed on heat transfer from radiators

Wind Speed (m/s)	h_{in} (W/m ² K)	h_{out} (W/m ² K)	Q_{out} (W)	Q_{in} (W)	\dot{m} buoyancy (Kg/s)
5	0.01251199	4.4311233	2159137.9	772226.57	16464.743
10	2.1285956	10.694275	3947900.7	785792.81	17124.18
15	2.3655674	15.005363	5539382.8	873273.36	21430.698
20	2.6408534	18.400471	6792721.2	974897.97	26642.426
25	2.9108267	21.26572	7850457.6	1074561.3	32085.014
30	3.1735902	23.826666	8795856.7	1171563.2	37739.897

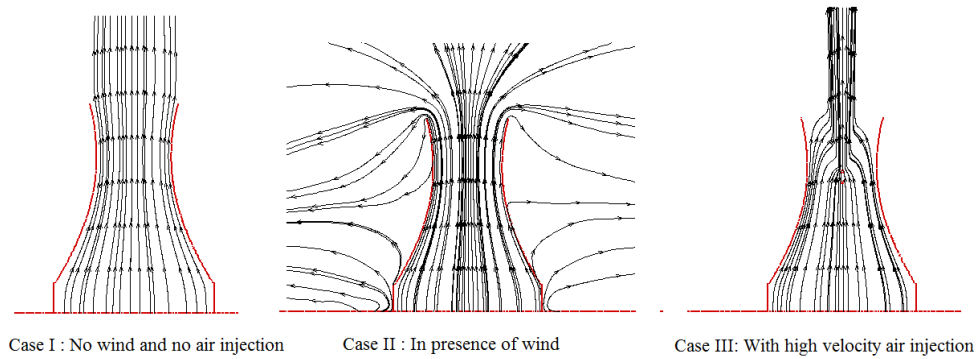


Figure 3. Streamlines of the air inside the tower in different cases

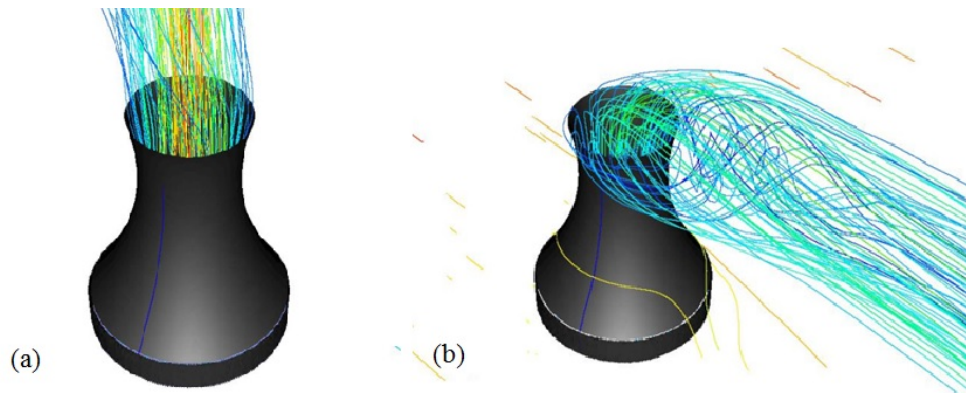


Figure 4. Pathlines of hot air from radiator (a) with no wind and (b) in presence of wind

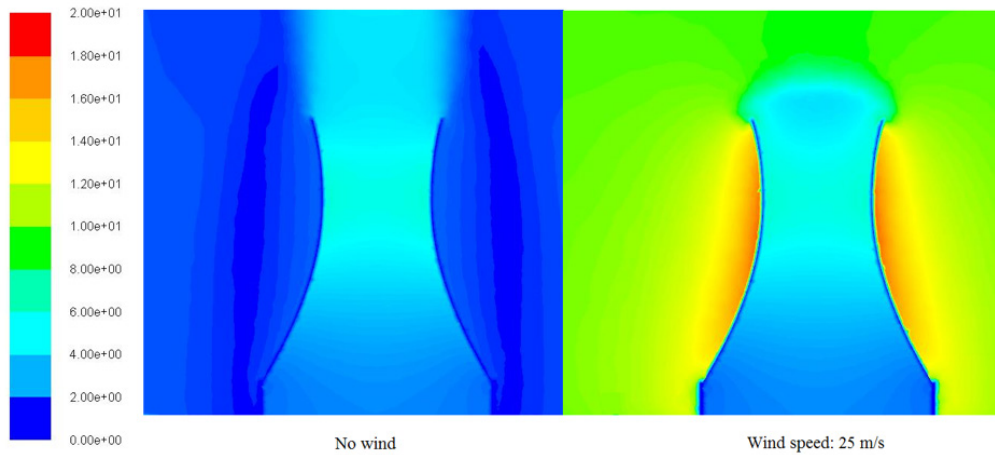


Figure 5. Contours of velocity magnitude (m/s) in two different cases

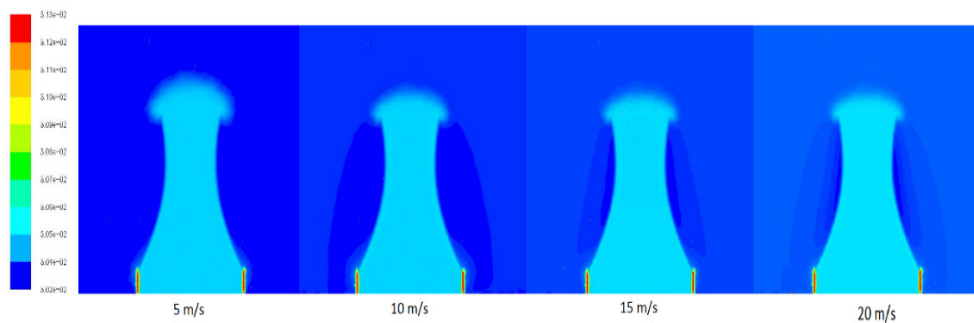
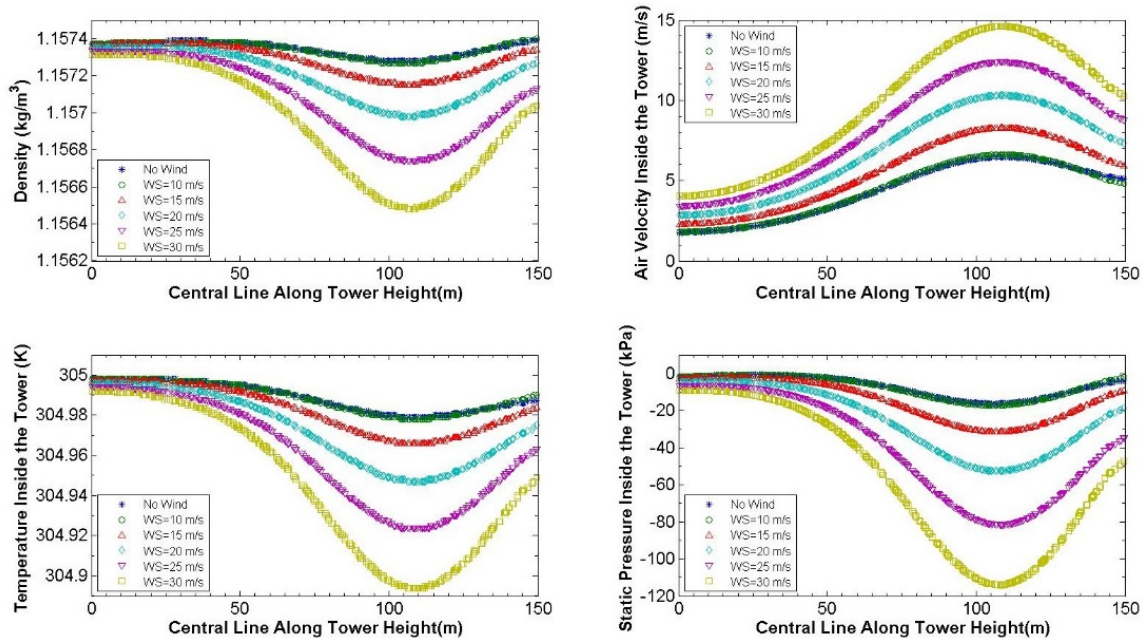
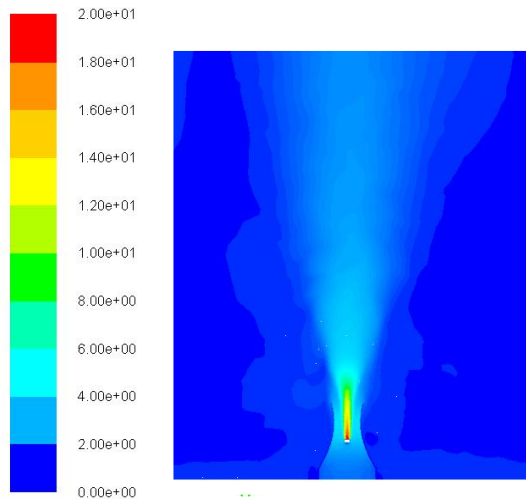
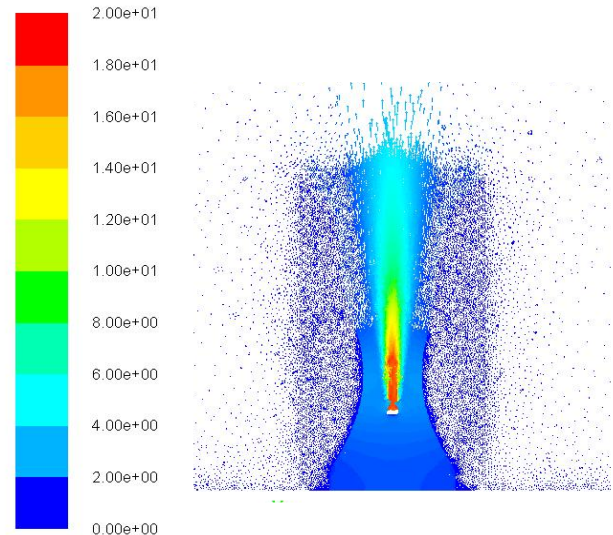


Figure 6. Contours of velocity magnitude (m/s) for 4 different wind speeds

Table 7. Effect of high velocity air injection on heat transfer from radiators

Injection velocity(m/s)	h_{in} (W/m ² K)	h_{out} (W/m ² K)	Q_{out} (W)	Q_{in} (W)	\dot{m} buoyancy (Kg/s)
10	6.1359758	3.6598704	1351078.5	2265158	17245.4
20	6.1944962	3.6604311	1374316.5	2286761.4	18444.
30	6.2443445	3.6755433	1398543.8	2304854.3	19135.1
40	6.2643245	3.6965433	1415432.9	2328754.9	20345.9

**Figure 7.** Effect of various wind speeds on performance of tower**Figure 8.** Contour of velocity magnitude (m/s) with high velocity air injection**Figure 9.** Velocity vectors for high velocity air injection

Contour and vector of velocity inside the tower for air injection at 20 m/s is shown in Fig. 8 and Fig. 9 respectively and effect of air injection on heat transfer from radiators is presented in Table 7. Note that in both Table 6 and 7, Q_{in} is the amount of heat being transferred from inner surface of the radiators to the air inside the tower. It should be noted that Q_{out} is the amount of heat transfer from radiator's outer surface to the air outside the tower.

6. Conclusions

In this study, 3-D CFD simulation of a dry cooling tower is performed to investigate effects of different parameters on natural convection heat transfer in a dry cooling tower. Different algorithms and turbulence models are used and the

best ones are selected. COUPLED algorithm for coupling pressure and velocity field shows the best results for the simulations. Modeling buoyancy for radiator's heat transfer rate using ideal gas law shows more consistency with experimental data rather than Boussinesq equation. In addition, among different RANS turbulence models used, k- ϵ RNG-full buoyancy effect is the best for simulating buoyancy. Finally, effects of wind speed and high velocity air injection are investigated. As it could be seen in Table 6, as the wind speed increases the pressure gradient in the tower increases and consequently air velocity increases. Increase in velocity inside the tower results in higher mass flow rate and higher convective heat transfer. After studying effects of high velocity air injection, it turns out that the performance of cooling tower is slightly improved compared to no wind conditions as in can be seen in Table 7. The improvement however, is not as much the case with wind and no injection. This means that air injection could be used to reinforce the flow in conditions with high turbulent flows around tower i.e. unstable weather like rain or storm in which wind direction changes a lot. Doing experimental investigation of all different cases is difficult since building these towers are expensive and studying this type of huge structures are not easy. Hence, CFD methods can be used to study cooling dry towers and to find probable solutions for increasing their efficiency.

Nomenclature

q'	Heat flux
h_x	Heat transfer coefficient
R	Cylinder diameter
U	Velocity in the Z direction
V	Velocity in r direction
T	Temperature
θ	Kinematic viscosity
α	Thermal conductivity of the fluid
T_∞	Bulk temperature of fluid
G	Gravity constant
β	Volumetric thermal expansion coefficient
D	Cylinder diameter
L	Cylinder length
k	Thermal conductivity of wall

Superscripts

s	Surface
w	Wall
in	Inner surface
out	Outer surface

REFERENCES

[1] Sabareesh GR, Matsui M, Tamura Y. Dependence of surface

- pressures on a cubic building in tornado like flow on building location and ground roughness. *Journal of wind engineering and industrial aerodynamics*. 2012 Apr 1;103:50-9.
- [2] Refan M, Hangan H, Wurman J. Reproducing tornadoes in laboratory using proper scaling. *Journal of Wind Engineering and Industrial Aerodynamics*. 2014 Dec 1;135:136-48.
- [3] Liu, Z. and Ishihara, T., 2016. Study of the effects of translation and roughness on tornado-like vortices by large-eddy simulations. *Journal of Wind Engineering and Industrial Aerodynamics*, 151, pp.1-24.
- [4] Razavi A, Ashrafizadeh A. Numerical Investigation on Damage Patterns of Low Swirl Translating Tornadoes. *MME*. 2014; 14 (6): 81-90 URL: <http://journals.modares.ac.ir/article-15-6936-en.html>.
- [5] Razavi A, Sarkar PP. Laboratory investigation of the effect of tornado translation on its near-ground flow field. *Laboratory investigation*. 2016 Jun 7.
- [6] Razavi A, Sarkar PP. Laboratory Study of Topographic Effects on the Near-surface Tornado Flow Field. *Boundary-Layer Meteorology*. 2018 Mar:1-24.
- [7] Haghighat, A.K., Roumi, S., Madani, N., Bahmanpour, D. and Olsen, M.G. 2018. An intelligent cooling system and control model for improved engine thermal management. *Applied Thermal Engineering*, 128, pp.253-263.
- [8] Razavi A, Sarkar PP. Tornado-induced wind loads on a low-rise building: Influence of swirl ratio, translation speed and building parameters. *Engineering Structures*. 2018 Jul 15;167:1-2.
- [9] Razavi A, Sarkar PP. Laboratory investigation of the effects of translation on the near-ground tornado flow field. *Wind and Structures*. 2018;26(3):179-190.
- [10] Eckert, E.R.G. (1960), *Analyses of Heat and Mass Transfer*, McGraw-Hill, New York, NY.
- [11] Ozisik, O.M., (1985), *Heat Transfer a Basic Approach*, McGraw-Hill, New York, NY.
- [12] Ramezani, M., Legg, M.J., Haghighat, A., Li, Z., Vigil, R.D. and Olsen, M.G., 2017. Experimental investigation of the effect of ethyl alcohol surfactant on oxygen mass transfer and bubble size distribution in an air-water multiphase Taylor-Couette vortex bioreactor. *Chemical Engineering Journal*, 319, pp.288-296.
- [13] Nagendra. H.R., Tirunarayan, M.A., and Ramachandran, A. (1969), "Free convection heat transfer from vertical cylinder and wires", *Chemical Engineering Science*, Vol. 24, pp. 1491-5.
- [14] McEligot, D.M., Stoots, C.M., Christenson, W.A., Mecham, D.C. and Lussie, W.G. (1993), "Turbulent natural convection from a vertical cylinder to an array of cooled tubes", *Journal of heat transfer, Transactions of the ASME Series C*, Vol. 115, pp. 928-37.
- [15] Keyhani, M., Kaluchi, A. and Christensen, R.N. (1983), "Free convection in a vertical annulus with constant heat flux on the inner wall", *Journal of heat transfer, Transactions of the ASME Series C*, Vol. 105, pp. 454-9.
- [16] Rogers, B.B. and Yao, L.S. (1993), "Natural convection in a heated annulus", *International Journal of Heat and Mass*

Transfer, Vol. 36, pp. 35-47.

- [17] Schneider, S. and Strub, J. (1992), "Laminar natural convection in a cylindrical enclosure with different temperatures", *International Journal of Heat and Mass Transfer*, Vol. 35, pp. 545-57.
- [18] Lee, H.R., Chen, T.S. and Armaly, B.F. (1988), "Natural convection along slender vertical cylinder with variable surface temperature", *Journal of heat transfer*, Vol. 110, pp. 103-9.
- [19] Badruddin, I.A., Zainal, Narayana, P.A.A. and Seetharamu, K.N. (2006), "Heat transfer by radiation and natural convection through a vertical annulus embedded in porous medium", *International Communications in Heat and Mass Transfer*, Vol. 33 No. 4, pp. 500-7.
- [20] A/K Abu-Hijleh, B., 2003. Optimized use of baffles for reduced natural convection heat transfer from a horizontal cylinder. *International journal of thermal sciences*, 42(11), pp.1061-1071.
- [21] Jafari, M.M., Atefi, G., Khalesi, J., Soleymani, A., 2012. A new conjugate heat transfer method to analyse a 3D steam cooled gas turbine blade with temperature-dependent material properties. *Proceedings of the Institution of Mechanical Engineers, Part C: Journal of Mechanical Engineering Science*, 226(5), pp.1309-1320.
- [22] Jafari, M.M., Atefi, G.A., Khalesi, J., 2012. Advances in nonlinear stress analysis of a steam cooled gas turbine blade. *Latin American applied research*, 42(2), pp.167-175.
- [23] Khaleghi, H., Dehkordi, M.A.S., Tousi, A.M., 2016. Role of tip injection in desensitizing the compressor to the tip clearance size. *Aerospace Science and Technology*, 52, pp.10-17.
- [24] Hafezisefat P, Esfahany MN, Jafari M. An experimental and numerical study of heat transfer in jacketed vessels by SiO₂ nanofluid. *Heat and Mass Transfer*. 2017 Jul 1; 53(7): 2395-405.
- [25] Moheimani, R., Damadam, M., Nayebi, A. and Dalir, H., 2018, July. Thick-Walled Functionally Graded Material Cylinder under Thermo-Mechanical Loading. In 2018 9th International Conference on Mechanical and Aerospace Engineering (ICMAE) (pp. 505-510). IEEE.
- [26] Jafari, M., Razavi, A. and Mirhosseini, M., 2018. Effect of Airfoil Profile on Aerodynamic Performance and Economic Assessment of H-rotor Vertical Axis Wind Turbines. *Energy*.
- [27] Li, K., Wright, J., Modaresahmadi, S., Som, D., Williams, W. and Bird, J.Z., 2017, October. Designing the first stage of a series connected multistage coaxial magnetic gearbox for a wind turbine demonstrator. In *Energy Conversion Congress and Exposition (ECCE)*, 2017 IEEE (pp. 1247-1254). IEEE.
- [28] Jafari, M., Razavi, A. and Mirhosseini, M., 2018. Effect of Steady and Quasi-Unsteady Wind on Aerodynamic Performance of H-Rotor Vertical Axis Wind Turbines. *Journal of Energy Engineering*, 144(6), p.04018065.
- [29] Moheimani, R. and Ahmadian, M.T., 2012, November. On Free Vibration of Functionally Graded Euler-Bernoulli Beam Models Based on the Non-Local Theory. In *ASME 2012 International Mechanical Engineering Congress and Exposition* (pp. 169-173). American Society of Mechanical Engineers.
- [30] Modares Ahmadi, S., Ghazavi, M. and Sheikhzad, M., 2015. Dynamic analysis of a rotor supported on ball bearings with waviness and centralizing springs and squeeze film dampers. *International Journal of Engineering*, 28, pp.1351-1358.
- [31] Jafari, M., Babajani, A., Hafezisefat, P., Mirhosseini, M., Rezaei, A., Rosendahl, L., 2018. Numerical simulation of a novel ocean wave energy converter. *Energy Procedia*, 147, pp.474-481.
- [32] Babajani, A., Jafari, M., Hafezisefat, P., Mirhosseini, M., Rezaei, A. and Rosendahl, L., 2018. Parametric study of a wave energy converter (Searaser) for Caspian Sea. *Energy Procedia*, 147, pp.334-342.
- [33] Khatibi, M., Zargarzadeh, H. and Barzegaran, M., 2016, September. Power system dynamic model reduction by means of an iterative SVD-Krylov model reduction method. In *Innovative Smart Grid Technologies Conference (ISGT)*, 2016 IEEE Power & Energy Society (pp. 1-6). IEEE.
- [34] Khatibi, M. and Ahmed, S., 2018, February. Optimal resilient defense strategy against false data injection attacks on power system state estimation. In *2018 IEEE Power & Energy Society Innovative Smart Grid Technologies Conference (ISGT)* (pp. 1-5). IEEE.
- [35] Imani, M.H., Yousefpour, K., Ghadi, M.J. and Andani, M.T., 2018, February. Simultaneous presence of wind farm and V2G in security constrained unit commitment problem considering uncertainty of wind generation. In *Texas Power and Energy Conference (TPEC)*, 2018 IEEE (pp. 1-6). IEEE.
- [36] Andani, M.T., Pourgharibshahi, H., Ramezani, Z. and Zargarzadeh, H., 2018, February. Controller design for voltage-source converter using LQG/LTR. In *Texas Power and Energy Conference (TPEC)*, 2018 IEEE (pp. 1-6). IEEE.
- [37] Poddar S, Ozcan K, Chakraborty P, Ahsani V, Sharma A, Sarkar S. Comparison of Machine Learning Algorithms to Determine Traffic Congestion from Camera Images. 2018.
- [38] Sharma A, Ahsani V, Rawat S. Evaluation of Opportunities and Challenges of Using INRIX Data for Real-Time Performance Monitoring and Historical Trend Assessment.
- [39] Chakraborty P, Adu-Gyamfi YO, Poddar S, Ahsani V, Sharma A, Sarkar S. Traffic Congestion Detection from Camera Images Using Deep Convolution Neural Networks. 2018.
- [40] Esmaili Torshabi, A. and Ghorbanzadeh, L., 2017. A Study on Stereoscopic X-ray Imaging Data Set on the Accuracy of Real-Time Tumor Tracking in External Beam Radiotherapy. *Technology in cancer research & treatment*, 16(2), pp.167-177.
- [41] Ghorbanzadeh, L. and Torshabi, A.E., 2017. An Investigation into the Performance of Adaptive Neuro-Fuzzy Inference System for Brain Tumor Delineation Using Expectation Maximization Cluster Method; a Feasibility Study. *Frontiers in Biomedical Technologies*, 3(1-2), pp.8-19.
- [42] Chouikh, R., Guizani, A., Maâlej, M. and Belghith, A. (1999), "Numerical study of the laminar natural convection flow around an array of two horizontal isothermal cylinders", *International Communications in Heat and Mass Transfer*, Vol. 26 No.3, pp. 329-38.
- [43] Yousefi, T. and Ashjaee, M. (2007), "Experimental study of natural convection heat transfer from vertical array of

- isothermal horizontal elliptic cylinders”, *Experimental Thermal and Fluid Science*, Vol. 32 No. 1, pp. 240-8.
- [44] Davani A.A., Kashfi M., Mozafary V., “Experimental analysis of a multistage water desalination system utilizing an evacuated parabolic solar trough with a solar tracker”, *arXiv preprint arXiv:1712.06576*, (2017).
- [45] Davani A., Kashfi M., Mozafary V. “Multi-Effect Solar Driven Distillation Still System”, IR patent 70325, (2011).
- [46] Divsalar A, Entesari N., Dods M.N., Prosser R.W., Egolfopoulos F.N., Tsotsis T.T., "A UV Photodecomposition Reactor for Siloxane Removal from Biogas: Modeling Aspects" *Chemical Engineering Science* (2018).
- [47] Gharraei R., Vejdani A., Baheri S., Davani A. “Numerical investigation on the fluid flow and heat transfer of non-Newtonian multiple impinging jets” *International Journal of Thermal Sciences*, 104 (2016) 257-265.
- [48] Kamrani, M., Levitas, V.I., Feng, B., (2017). FEM simulation of large deformation of copper in the quasi constrain high-pressure torsion setup. *Materials Science & Engineering A*, (705), 219-230.
- [49] Kamrani, M., Feng, B., Levitas, V.I., (2018). Modeling of Strain-Induced Phase Transformations under High Pressure and Shear. *The Minerals, Metals & Materials Series*, https://doi.org/10.1007/978-3-319-76968-4_8.
- [50] Feng, B., Levitas, V.I. and Kamrani, M., 2018. Coupled strain-induced alpha to omega phase transformation and plastic flow in zirconium under high pressure torsion in a rotational diamond anvil cell. *Materials Science and Engineering: A*.